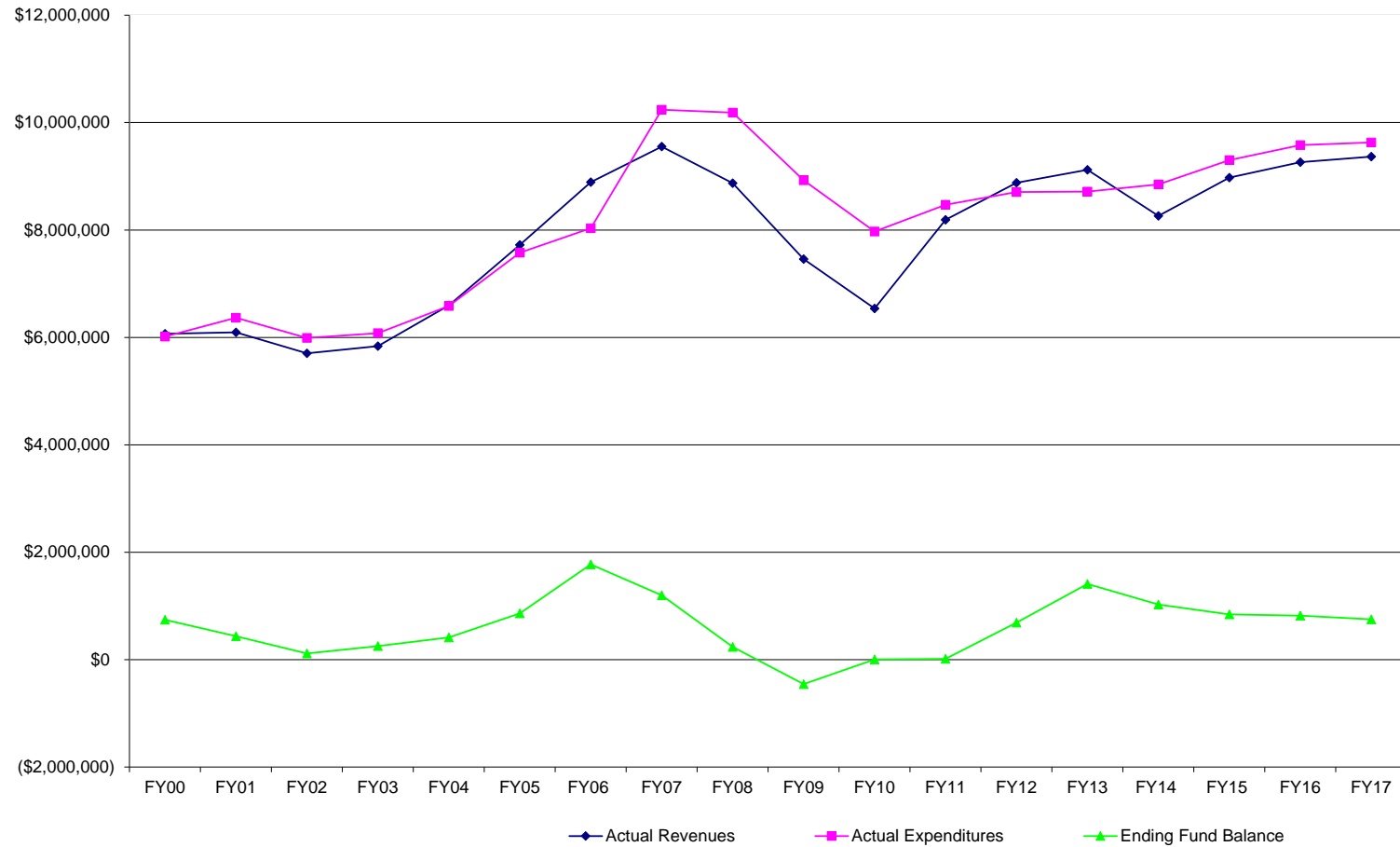


## General Fund Revenues, Expenditures, and Ending Fund Balance

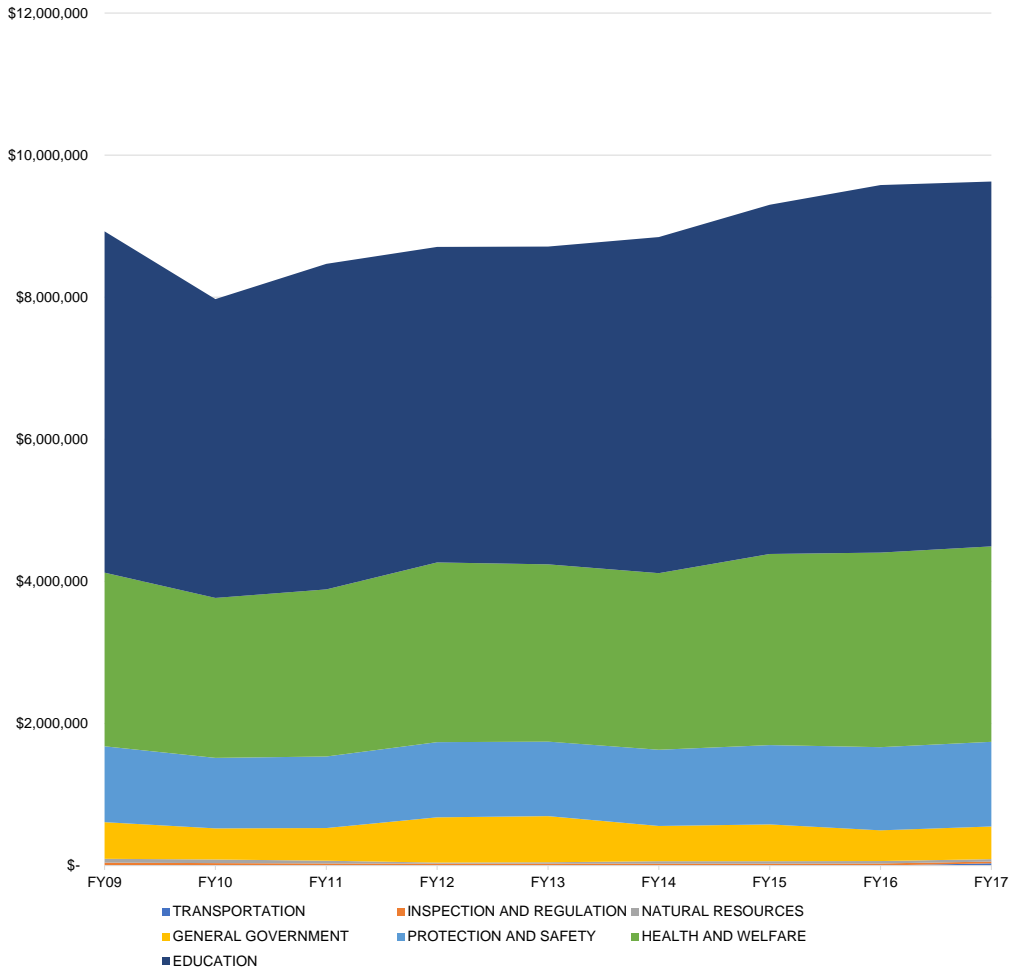


General Fund			
Rev vs Exp (actuals)			
FY	Actual Revenues	Actual Expenditures	Ending Fund Balance
FY00	\$ 6,066,474	\$ 6,014,599	\$ 743,286
FY01	\$ 6,093,179	\$ 6,367,707	\$ 437,132
FY02	\$ 5,703,505	\$ 5,989,094	\$ 115,405
FY03	\$ 5,837,314	\$ 6,078,893	\$ 250,446
FY04	\$ 6,595,898	\$ 6,583,514	\$ 412,612
FY05	\$ 7,724,323	\$ 7,578,314	\$ 860,880
FY06	\$ 8,892,184	\$ 8,034,017	\$ 1,773,058
FY07	\$ 9,552,123	\$ 10,239,388	\$ 1,196,371
FY08	\$ 8,870,188	\$ 10,185,184	\$ 237,386
FY09	\$ 7,457,617	\$ 8,926,669	\$ (455,891)
FY10	\$ 6,537,790	\$ 7,972,905	\$ 1,860
FY11	\$ 8,190,602	\$ 8,469,096	\$ 14,298
FY12	\$ 8,881,087	\$ 8,708,707	\$ 689,742
FY13	\$ 9,121,882	\$ 8,713,854	\$ 1,409,133
FY14	\$ 8,262,913	\$ 8,847,537	\$ 1,024,303
FY15	\$ 8,974,240	\$ 9,301,018	\$ 842,575
FY16	\$ 9,260,982	\$ 9,579,125	\$ 818,375
FY17	\$ 9,364,802	\$ 9,628,494	\$ 749,345

\* in thousands

\*Source: FY00-FY17 Annual Financial Report (AFR)

### General Fund Expenditures by Function



Expenditures									
General Fund									
State Function	FY09	FY10	FY11	FY12	FY13	FY14	FY15	FY16	FY17
TRANSPORTATION	\$ 70	\$ 57	\$ 44	\$ 51	\$ 50	\$ 4	\$ 1	\$ 1,250	\$ 31,550
INSPECTION AND REGULATION	\$ 41,762	\$ 33,330	\$ 30,003	\$ 27,749	\$ 27,108	\$ 27,918	\$ 28,129	\$ 27,702	\$ 25,498
NATURAL RESOURCES	\$ 53,650	\$ 53,314	\$ 37,416	\$ 14,333	\$ 20,473	\$ 32,892	\$ 34,281	\$ 34,491	\$ 34,541
GENERAL GOVERNMENT	\$ 516,704	\$ 435,659	\$ 461,815	\$ 638,195	\$ 647,975	\$ 495,899	\$ 517,434	\$ 432,412	\$ 457,766
PROTECTION AND SAFETY	\$ 1,066,526	\$ 993,615	\$ 1,005,877	\$ 1,058,019	\$ 1,050,026	\$ 1,072,589	\$ 1,116,404	\$ 1,170,279	\$ 1,193,894
HEALTH AND WELFARE	\$ 2,443,607	\$ 2,251,377	\$ 2,352,949	\$ 2,528,515	\$ 2,495,280	\$ 2,487,269	\$ 2,690,033	\$ 2,738,357	\$ 2,750,037
EDUCATION	\$ 4,804,350	\$ 4,205,552	\$ 4,580,992	\$ 4,441,845	\$ 4,472,942	\$ 4,730,966	\$ 4,914,736	\$ 5,174,634	\$ 5,135,209
<b>Total Expenditures</b>	<b>\$ 8,926,669</b>	<b>\$ 7,972,905</b>	<b>\$ 8,469,096</b>	<b>\$ 8,708,707</b>	<b>\$ 8,713,854</b>	<b>\$ 8,847,537</b>	<b>\$ 9,301,018</b>	<b>\$ 9,579,125</b>	<b>\$ 9,628,494</b>

\* in thousands  
 \*Source: FY09-FY17 Annual Financial Report (AFR)

The information shown in these graphs has been rounded to match the AFR, and therefore, minor differences may be found when adding the totals. The rounding differences are inconsequential.