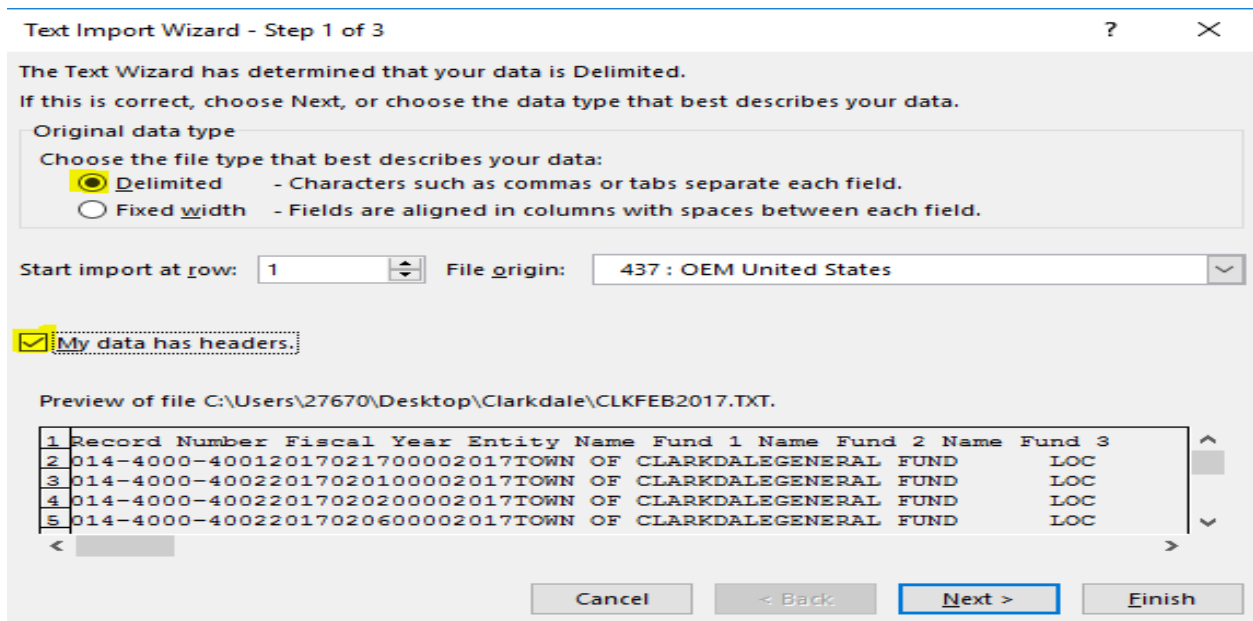
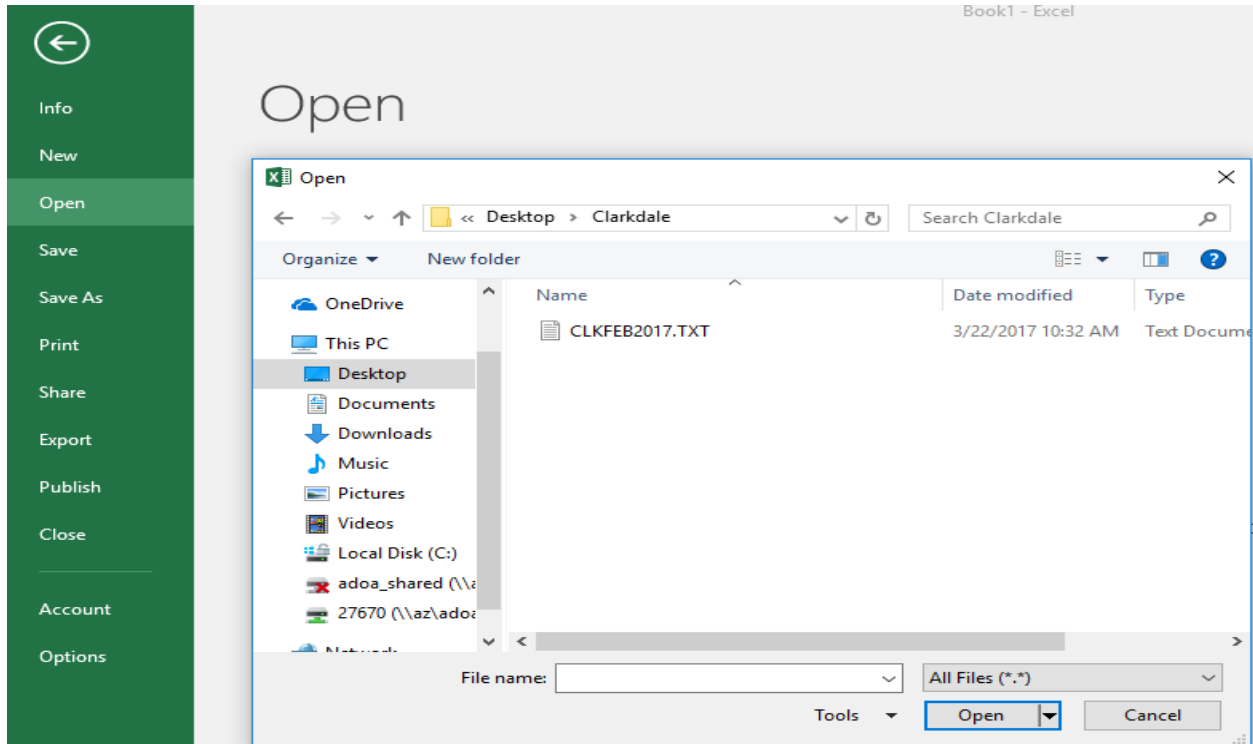


## File Conversion Instructions (.txt to .xlsx)



Text Import Wizard - Step 2 of 3

This screen lets you set the delimiters your data contains. You can see how your text is affected in the preview below.

Delimiters

- Tab
- Semicolon
- Comma
- Space
- Other:

Treat consecutive delimiters as one

Text qualifier: [none]

Data preview

| Record Number             | Fiscal Year | Entity Name       | Fund 1 Name  | Fund |
|---------------------------|-------------|-------------------|--------------|------|
| 014-4000-4001201702170000 | 2017        | TOWN OF CLARKDALE | GENERAL FUND |      |
| 014-4000-4002201702010000 | 2017        | TOWN OF CLARKDALE | GENERAL FUND |      |
| 014-4000-4002201702020000 | 2017        | TOWN OF CLARKDALE | GENERAL FUND |      |
| 014-4000-4002201702060000 | 2017        | TOWN OF CLARKDALE | GENERAL FUND |      |

Buttons: Cancel, < Back, Next >, Finish

Text Import Wizard - Step 3 of 3

This screen lets you select each column and set the Data Format.

Column data format

- General
- Text
- Date: MDY
- Do not import column (skip)

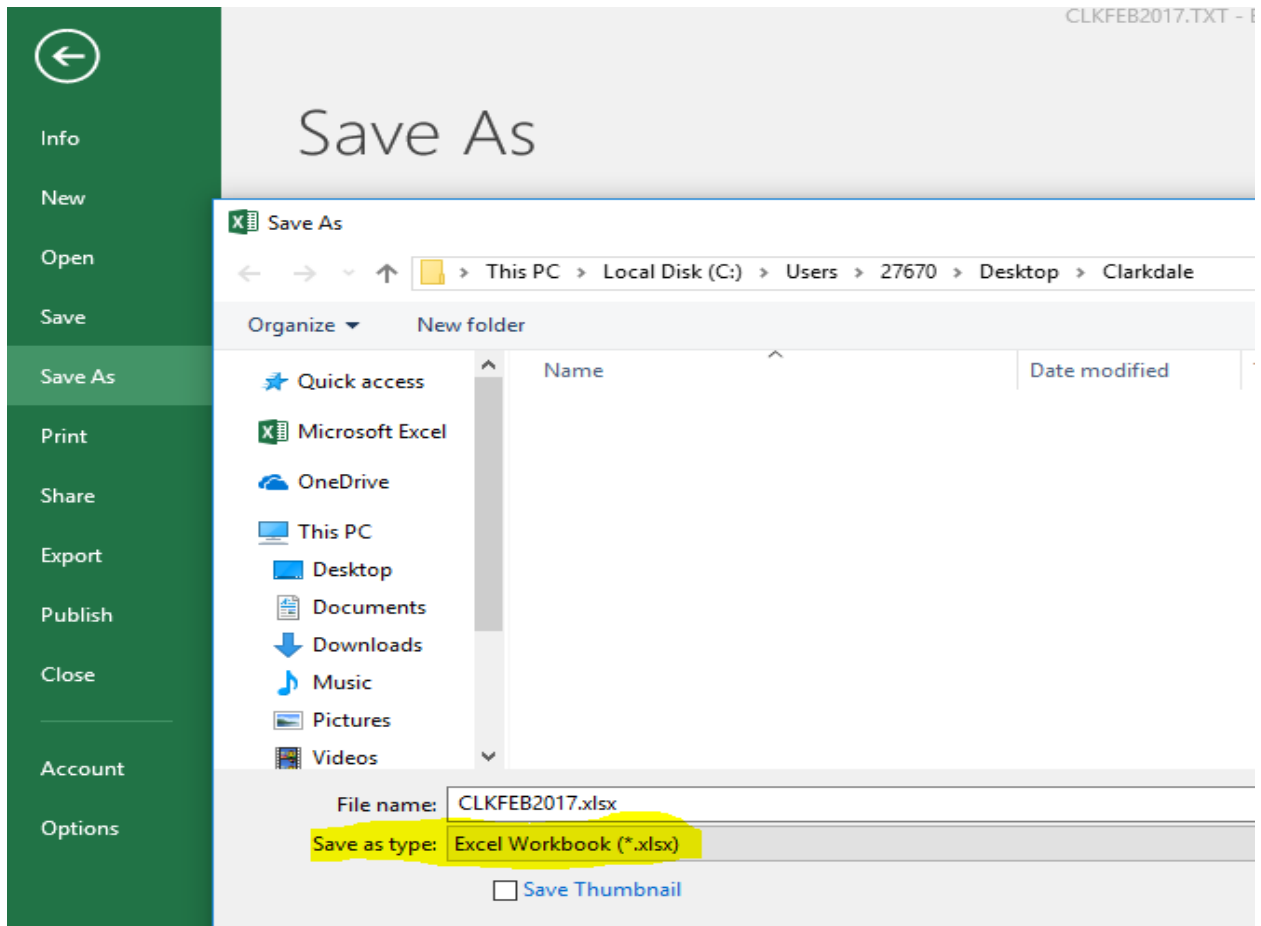
'General' converts numeric values to numbers, date values to dates, and all remaining values to text.

Advanced...

Data preview

| General                   | General     | General           | General      | Gener |
|---------------------------|-------------|-------------------|--------------|-------|
| Record Number             | Fiscal Year | Entity Name       | Fund 1 Name  | Fund  |
| 014-4000-4001201702170000 | 2017        | TOWN OF CLARKDALE | GENERAL FUND |       |
| 014-4000-4002201702010000 | 2017        | TOWN OF CLARKDALE | GENERAL FUND |       |
| 014-4000-4002201702020000 | 2017        | TOWN OF CLARKDALE | GENERAL FUND |       |
| 014-4000-4002201702060000 | 2017        | TOWN OF CLARKDALE | GENERAL FUND |       |

Buttons: Cancel, < Back, Next >, Finish



This is the file that can now be uploaded into OpenBooks.